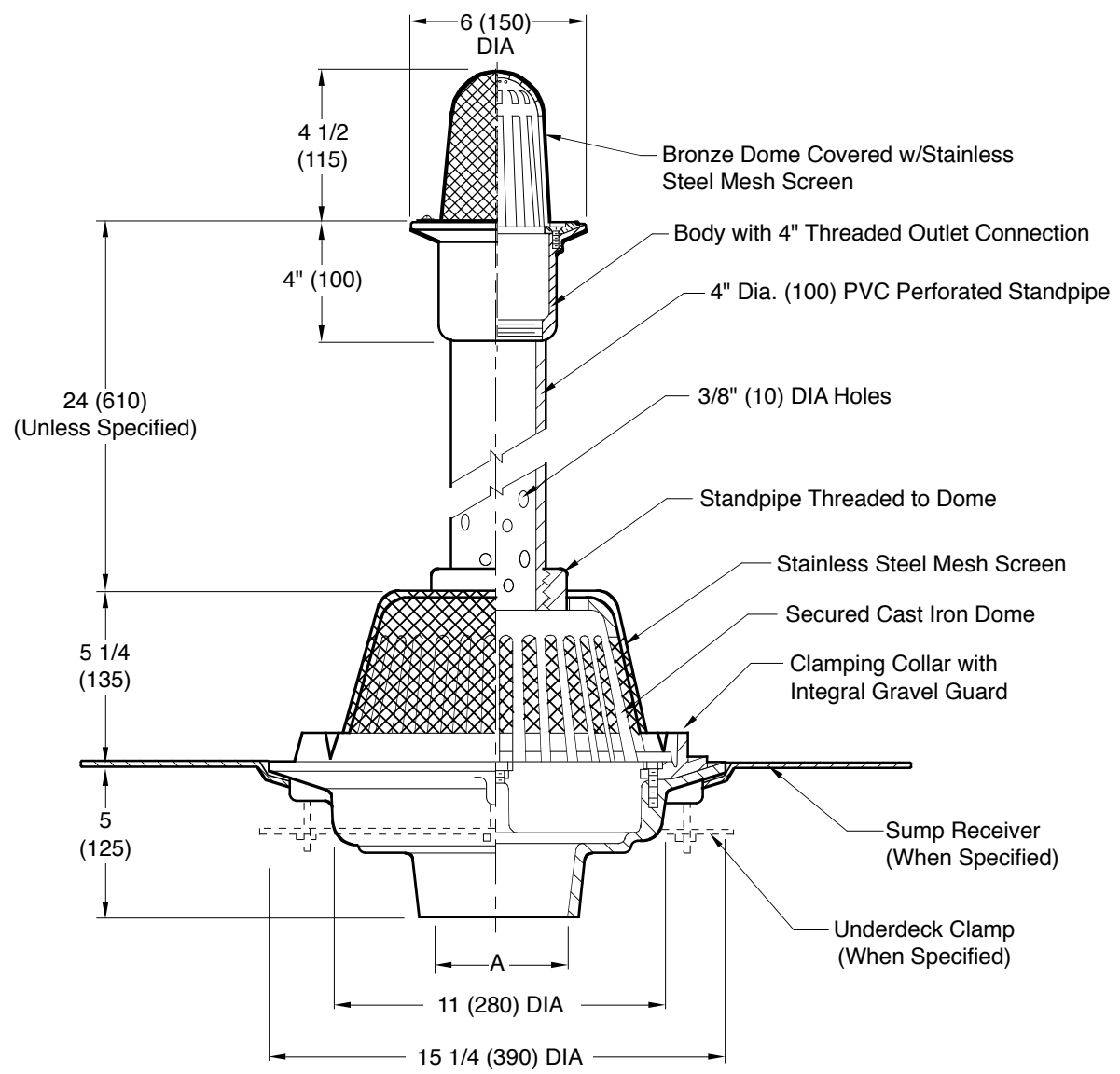


MULTI-LEVEL PLANTING AREA DRAIN



A (Pipe Size) = 02(50), 03(75), 04(100), 05(125) or 06(150)

Fig. 1905 . . . NO-HUB Outlet (Threaded or Inside Caulk Outlet) When Specified

REGULARLY FURNISHED:
 Duco Cast Iron Upper Body with Bronze Flashing Clamp, Secured Bronze Dome with Stainless Steel Mesh Screen.
 Duco Cast Iron Lower Body with Combined Flashing Clamp and Gravel Stop with Cast Iron Dome Covered with Stainless Steel Mesh Screen with Dome Modified to Accept PVC Threaded Standpipe, Height as Required.

- VARIATIONS:**
- Sump Receiver -R
 - Underdeck Clamp -C
 - Vandal Proof Dome -U

- OPTIONS:**
- Upper Drain as Specified.
 - Stainless Steel Mesh Screen over Perforated Standpipe.

NOTE: Dimensions shown in parentheses are in millimeters.

DRAWING NUMBER: s1905
 SIZE: A
 SCALE: NONE
 DATE: 10-24-02
 APPROVED BY: BW
 CHECKED BY: ECW
 DRAWN BY: RN
 FIGURE NUMBER: 1905

WE CAN ASSUME NO RESPONSIBILITY FOR USE OF SUPERSEDED OR VOID DATA
 DIMENSIONS ARE SUBJECT TO MANUFACTURERS TOLERANCE AND CHANGE WITHOUT NOTICE

REV.	DATE	DESCRIPTION	BY	CKD. BY	WEIGHT POUNDS	VOLUME CUBIC FEET	FIGURE NUMBER
C B A	04/19/10 03/25/10 10/29/09	Added 24 unless specified Removed SQ note Renamed as 1905	JJ JJ JJ	TK TK TK			1905