

ROOF ACCESSORY

THREADED TYPE ROOF COUPLING

FUNCTION: Used as a counterflashing sleeve where the roofing membranes are terminated at the stack which passes through the roof. Sleeve is threaded so that stack may be extended to the desired height.

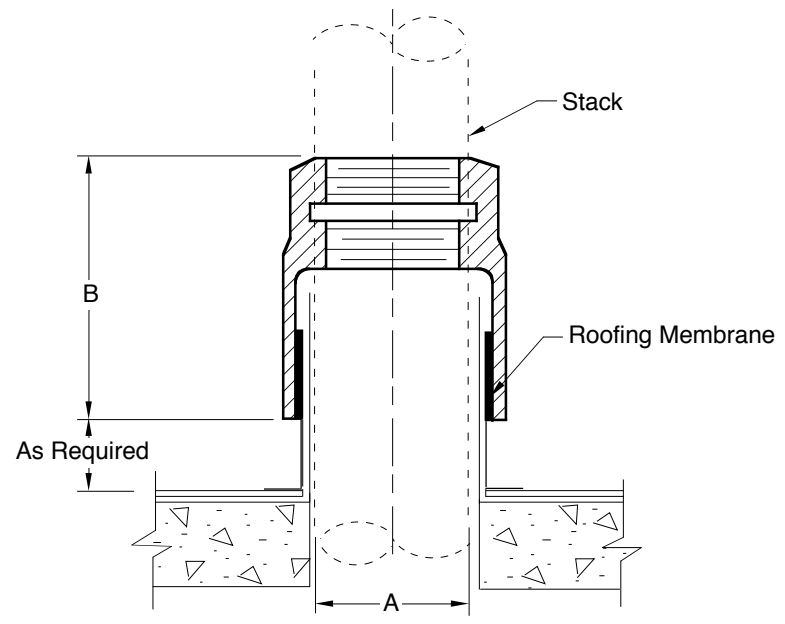


Fig. 1750T

NOTE: Dimensions shown in parentheses are in millimeters.

A	0125	0150	02	0250	03	04	05	06	08	10
SIZE	(30)	(40)	(50)	(65)	(75)	(100)	(125)	(150)	(200)	(255)
B	5	4	4	4 3/4	4 1/2	4 1/2	5 1/2	5 1/2	6 1/2	6 1/2
	(125)	(100)	(100)	(120)	(115)	(115)	(140)	(140)	(165)	165)

REGULARLY FURNISHED:
Duco Cast Iron

OPTIONAL MATERIALS:
 Galvanized Cast Iron -G

1750

FIGURE NUMBER	1750	WEIGHT POUNDS	VOLUME CUBIC FEET	FIGURE NUMBER 1750
REV.	DATE	DESCRIPTION	BY	CKD. BY
C B A	6-16-99 4-7-97 7-1-94	Revised Millimeters Added Millimeters Submittal Update	CMD EMB EMB	BS BS BS

DRAWING NUMBER S1750
 SIZE A
 SCALE: NONE
 DATE: 5-24-85
 APPROVED BY: TD
 CHECKED BY: TD
 DRAWN BY: VGD
 DIMENSIONS ARE SUBJECT TO MANUFACTURERS TOLERANCE AND CHANGE WITHOUT NOTICE
 WE CAN ASSUME NO RESPONSIBILITY FOR USE OF SUPERSEDED OR VOID DATA