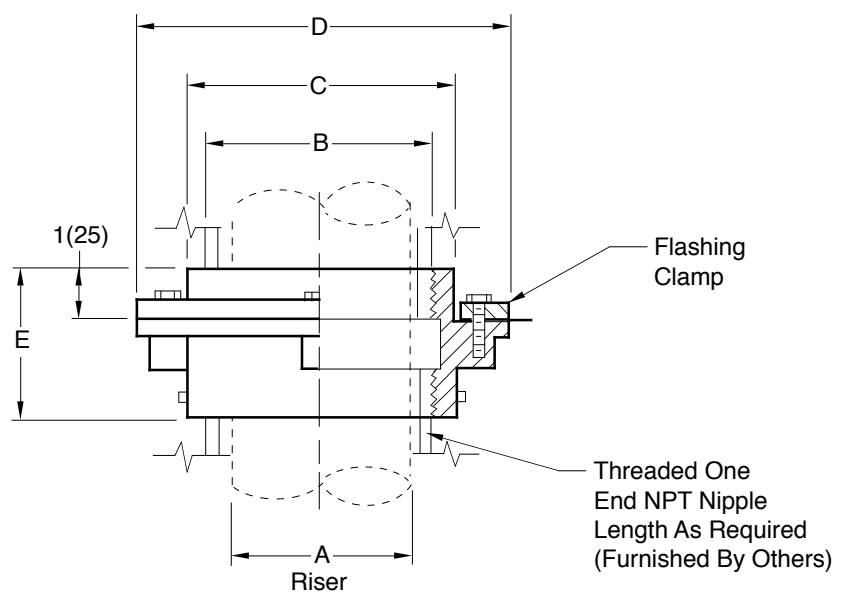


ROOF ACCESSORY

RISER SLEEVE ADAPTOR

FUNCTION: Used as an adaptor type riser sleeve. Length of sleeve may be extended by inserting pipe nipples in either end of sleeve. Integral flashing flange is provided for use in waterproofed floors.



□ Fig. 1760T

A=RISER	0150(40)	02(50)	0250(65)	03(75)	04(100)	05(125)	06(150)
B=SIZE	2 1/2(64)	3(76)	4(100)	4(100)	5(125)	6(150)	8(205)
C=DIA	4(100)	4(100)	5(125)	5(125)	6 1/2(165)	7 1/2(190)	10(255)
D=DIA	6 1/2(165)	6 1/2(165)	7 1/4(185)	7 1/4(185)	9 1/4(235)	10 1/4(260)	13 1/2(345)
E	3(76)	3(76)	3(76)	3(76)	3 1/2(89)	3 3/4(95)	4(100)

ALWAYS SPECIFY (A - RISER) SIZE

REGULARLY FURNISHED:
 Duco Cast Iron Body with Flashing Clamp.

OPTIONAL MATERIALS:
 □ Galvanized Cast Iron -G

NOTE: Dimensions shown in parentheses are in millimeters.

DRAWING NUMBER **S1760**
 SIZE **A**
 SCALE: **NONE**
 DATE: **5-24-85**
 APPROVED BY: **TD**
 CHECKED BY: **TD**
 DRAWN BY: **CR**
 FIGURE NUMBER **1760**

WE CAN ASSUME NO RESPONSIBILITY FOR USE OF SUPERSEDED OR VOID DATA

B	6-16-99	Added Millimeters Submittal Update	CMD	BS	WEIGHT POUNDS	VOLUME CUBIC FEET	FIGURE NUMBER
A	7-1-94		EMB	BS			1760
REV.	DATE	DESCRIPTION	BY	CKD. BY			