

G



JAY R. SMITH MFG. CO.
 DIVISION OF SMITH INDUSTRIES, INC.
 POST OFFICE BOX 3237
 MONTGOMERY, ALABAMA 36109-0237 (USA)
 TEL: 334-277-8520 FAX: 334-272-7396 www.jrsmith.com



LOCATION

DRAWING NUMBER

S1330

SIZE

A

SCALE:

NONE

DATE:

5-24-85

APPROVED BY:

TD

CHECKED BY:

TD

DRAWN BY:

TD

1330, 1340

WE CAN ASSUME NO RESPONSIBILITY FOR USE OF SUPERSEDED OR VOID DATA

DIMENSIONS ARE SUBJECT TO MANUFACTURERS TOLERANCE AND CHANGE WITHOUT NOTICE

GENERAL PURPOSE ROOF DRAINS

8 1/2" (215) DIAMETER - LOW PROFILE DOME

FUNCTION: Used in flat roofs, gutters or valleys of any construction. Small diameter pan is particularly adaptable to gutters and valleys where limited space is available. Flashing clamp holds flashing and roofing materials without puncturing. Low profile dome provides sufficient free area for quick drainage of rain water and protects the drain sump and connected piping from the intrusion of debris.

Free Area
 41.5 SQ IN
 (268) SQ CM

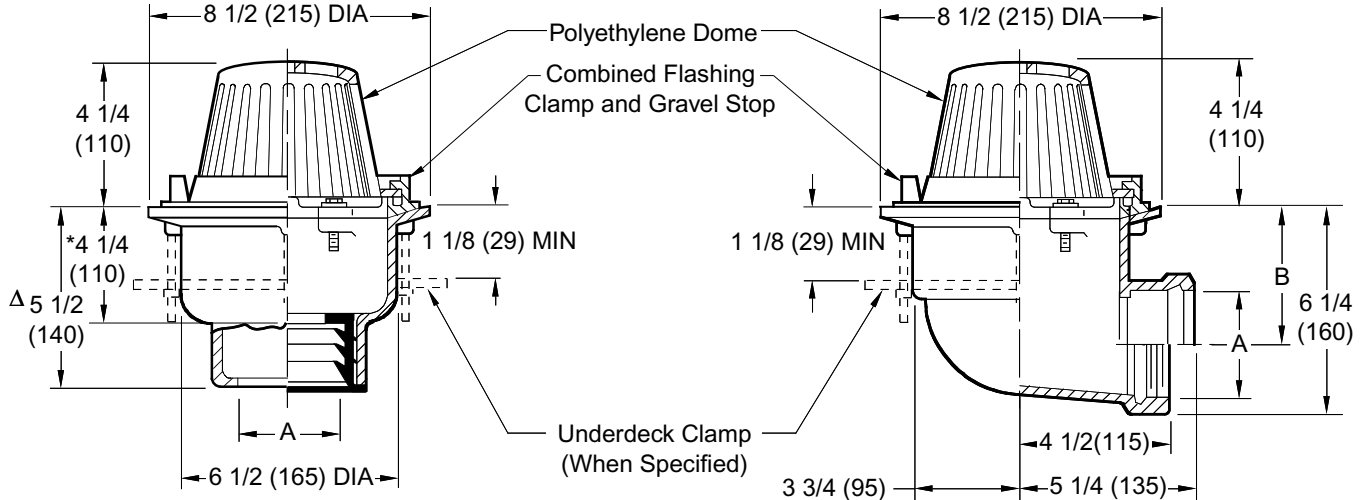


Fig. 1330C CAULK OUTLET
 Fig. 1330Y NO-HUB OUTLET

Fig. 1340C CAULK OUTLET
 Fig. 1340T THREADED OUTLET

A (Pipe Size) = 02(50), 03(75) or 04(100)

recommended deck opening	
with suffix -R	9(230) DIA
less suffix -R	7 3/4(195) DIA

*This Dimension to Internal

Stop of Speedi-Set Gasket.
 Δ Same for Caulk, NO-HUB and Speedi-Set, 4 1/4(110) for Threaded.

A SIZE	02 (50)	03 (75)	04 (100)
B	4 1/2 (115)	4 (100)	3 1/2 (89)

REGULARLY FURNISHED:

Duco Cast Iron Body with Combined Flashing Clamp and Gravel Stop with Polyethylene Dome.

VARIATIONS:

- Expansion Joint (Specify Fig. 1710) (Fig. 1330 only)
- Extension -E (Specify Height) 2"(51) High Water Dam -WD
- "L" Shaped Underdeck Clamp -CL
- L Speedi-Set Service Weight (Fig. 1330 only)
- LXH Speedi-Set Extra Heavy (Fig. 1330 only)
- NO-HUB Adaptor (Specify Fig. 2646Y) (Fig. 1340 only)
- Secondary Flashing Clamp -C2
- Sump Receiver -R
- Underdeck Clamp -C
- Vandal Proof Dome -U
- T Threaded Outlet

OPTIONAL MATERIALS:

- Aluminum Dome -AD
- Cast Iron Dome -CID
- Galvanized Cast Iron Body & Collar -G
- Galvanized Cast Iron Dome -CIDG
- Rough Bronze Dome -RBD

NOTE: Dimensions shown in parentheses are in millimeters.

REV.	DATE	DESCRIPTION	BY	CKD. BY
	11-1-02 5-26-99 4-7-97	Rev. "V" Notch Rev. Opt. Mat. Added Millimeters	RN CMD EMB	BS BS

WEIGHT POUNDS	VOLUME CUBIC FEET

FIGURE NUMBER
1330, 1340