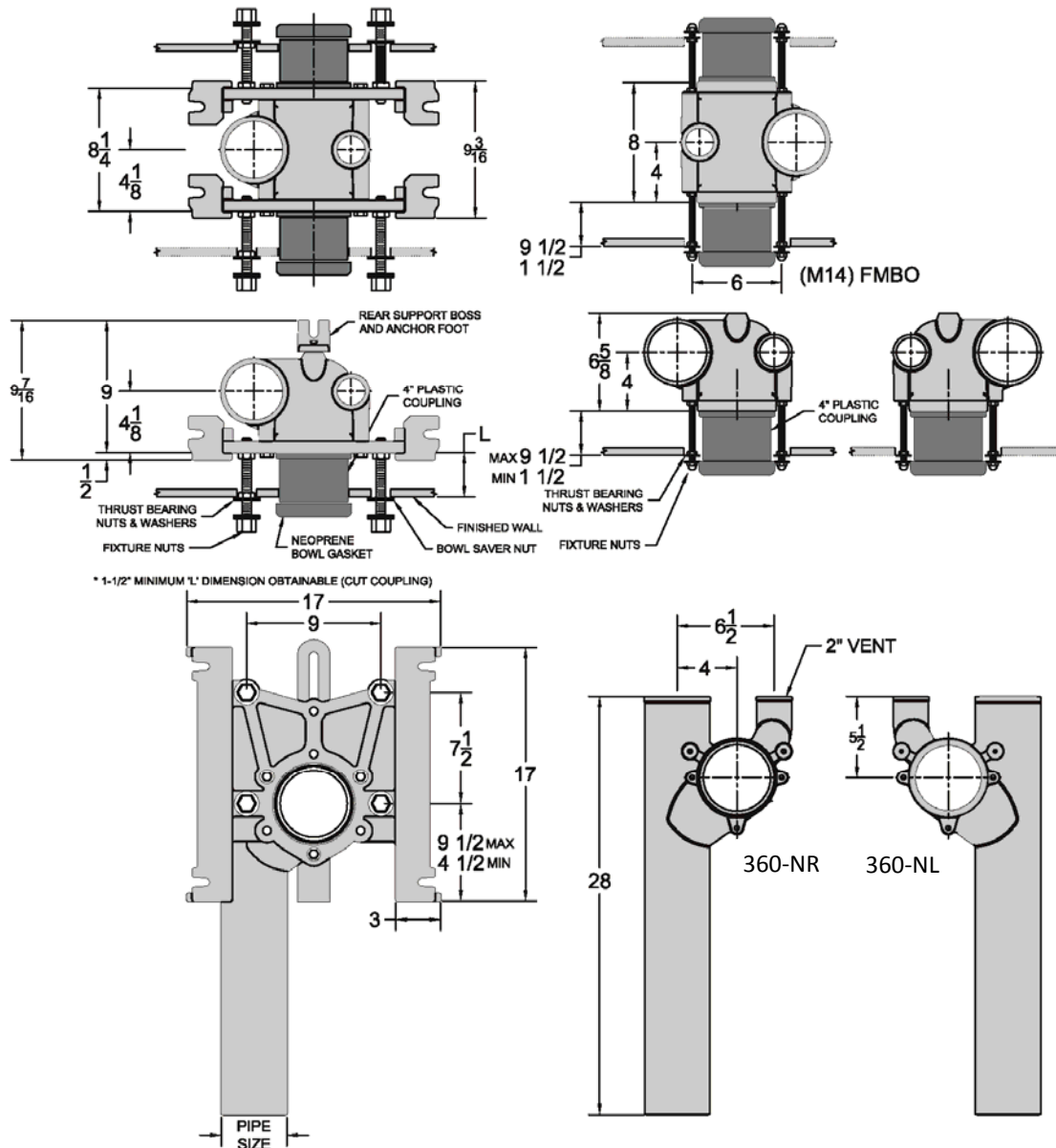


## 360 Fixed, Offset Vertical Water Closet Support

Project		Engineer		Mechanical	
---------	--	----------	--	------------	--



**Regularly Furnished:** Fixed, offset vertical water closet carrier with 2" vent, floor mounted foot supports, & faceplate.

•	Model	Connection Type	Orientation
	360-NL4	No-Hub	Left
	360-NR4		Right
	360-ND4		Double

Suffix Options		
Suffix	Description	•
-JS	2" Stack Side No-Hub Auxiliary Inlet	
-JV	2" Vent Side 45° No-Hub Auxiliary Inlet	
-M26	Adjustable Cast Iron Coupling	
-M14	FMBO Fitting Only *	
-M15	FMBO w/ Fitting Support *	

Faceplate Variations		•
-HD	Heavy Duty (500 Lb Rating)	
-XH	Extra Heavy Duty (750 Lb Rating)	
-XB	Bariatric (1,000 Lb Rating)	
Suffix Options		•
-AM1	Flush Valve Support	
-AM21	Tiling Frame	
-ECC	Longer Coupling & Hardware (Per In.)	
-M3	Vandal Proof Hardware	
-M4	Rod Support Feet (Req'd for -ECC)	

\*Dimensions vary from illustration